

KOMATSU

PC170LC-11

PRELIMINARY



Hydraulic excavator

Engine power
90 kW / 121 HP @ 2100 rpm

Operating weight
18180 - 18885 kg

Bucket capacity
max. 0.94 m³

PC170LC-11



Engine power
90 kW / 121 HP @ 2100 rpm

Operating weight
18180 - 18885 kg

Bucket capacity
max. 0.94 m³

Increased productivity and environmental performance

Powerful and environmentally friendly

- NEW** • EU Stage V engine
- NEW** • Long-life Komatsu diesel particulate filter (DPF)
- NEW** • 3% less fuel consumption vs Dash 11
 - Adjustable idle shutdown
 - Komatsu fuel-saving technology
 - Engine fan clutch

Maximized efficiency

- NEW** • Komatsu Integrated Attachment Control (KIAC) (option)
- NEW** • Dozer blades available in 2 blade widths (option)
 - Enhanced engine management
 - Lower hydraulic pressure loss
 - Low ground pressure (LGP) undercarriage (option)

First-class comfort

- Fully air-suspended operator station
- KomVision surround view system
- Widescreen monitor
- Low-noise design
- NEW** • DAB+ digital radio (option)

Safety first

- NEW** • LED lighting standard
- Komatsu SpaceCab™
- Neutral position detection system
- Safe access, easy maintenance
- ROPS (ISO 12117) - OPG (ISO 10262) level 1

Quality you can rely on

- Komatsu-quality components
- Extensive dealer support network

Komtrax

- Komatsu Wireless Monitoring System
- 4G mobile communications
- Integrated communication antenna
- Operational data and reports



A maintenance program for Komatsu customers

Engine

Model	Komatsu SAA4D107E-5
Type	Common rail direct injection, water-cooled, emissionised, turbocharged, after-cooled diesel
Engine power	
at rated engine speed	2100 rpm
ISO 14396	90 kW / 121 HP
ISO 9249 (net engine power)	90 kW / 121 HP
No. of cylinders	4
Bore × stroke	107 × 124 mm
Displacement	4.46 ltr
Air filter type	Double element type with monitor panel dust indicator and auto dust evacuator
Cooling	Suction type cooling fan with radiator fly screen

Environment

Engine emissions	Fully complies with EU Stage V exhaust emission regulations
Noise levels	
LwA external	99 dB(A) (2000/14/EC Stage II)
LpA operator ear	68 dB(A) (ISO 6396 dynamic test)
Vibration levels (EN 12096:1997)	
Hand/arm	≤ 2.5 m/s ² (uncertainty K = 0.38 m/s ²)
Body	≤ 0.5 m/s ² (uncertainty K = 0.16 m/s ²)
Contains fluorinated greenhouse gas HFC-134a (GWP 1430). Quantity of gas 0.9 kg; CO ₂ equivalent 1.29 t	

Hydraulic system

Type	HydraMind. Closed-centre system with load sensing and pressure compensation valves
Additional circuits	2 additional circuits with proportional control can be installed
Main pump	1 variable displacement piston pump supplying boom, arm, bucket, swing and travel circuits
Maximum pump flow	298 ltr/min
Relief valve settings	
Implement	380 kg/cm ²
Travel	380 kg/cm ²
Swing	295 kg/cm ²
Pilot circuit	33 kg/cm ²

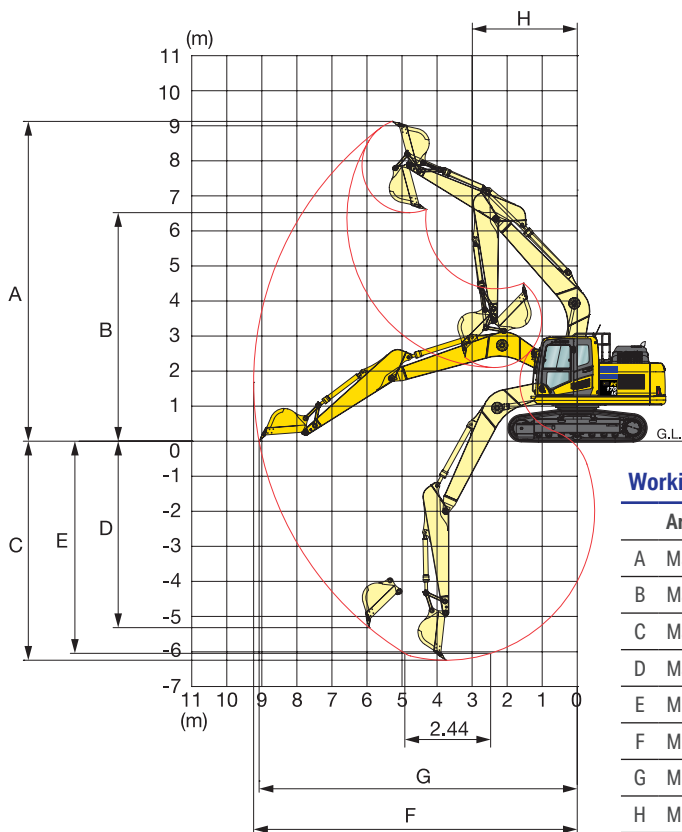
Undercarriage

Construction	X-frame centre section with box section track frames
Track assembly	
Type	Fully sealed
Shoes (each side)	44
Tension	Combined spring and hydraulic unit
Rollers	
Track rollers (each side)	7
Carrier rollers (each side)	2

Operating weight (appr.)

Mono boom		
Triple grouser shoes	Operating weight	Ground pressure
500 mm	18180 kg	0.52 kg/cm ²
600 mm	18400 kg	0.44 kg/cm ²
700 mm	18665 kg	0.38 kg/cm ²
800 mm	18885 kg	0.34 kg/cm ²

Operating weight, including specified work equipment, 2,6 m arm, 495 kg bucket, operator, lubricant, coolant, full fuel tank and the standard equipment.



Working range (mono boom)

Arm length	2.25 m	2.6 m	2.9 m
A Max. digging height	8910 mm	8980 mm	9130 mm
B Max. dumping height	6280 mm	6370 mm	6525 mm
C Max. digging depth	5610 mm	5960 mm	6250 mm
D Max. vertical wall digging depth	4860 mm	5040 mm	5320 mm
E Max. digging depth of cut for 2440 mm level	5375 mm	5740 mm	6050 mm
F Max. digging reach	8680 mm	8960 mm	9235 mm
G Max. digging reach at ground level	8510 mm	8800 mm	9075 mm
H Min. swing radius	3040 mm	2990 mm	2995 mm