



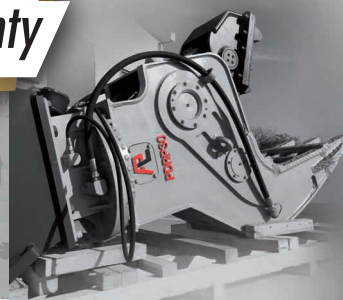
PULVERIZER

**TOP QUALITY
AVAILABLE
FROM STOCK**

- » • Fast open/close cycle
- High closing force
- Equipped with cutting blade
- Equipped with rechargeable toothplate
- Available with or without rotation



**3 years
warranty**



Pladdet



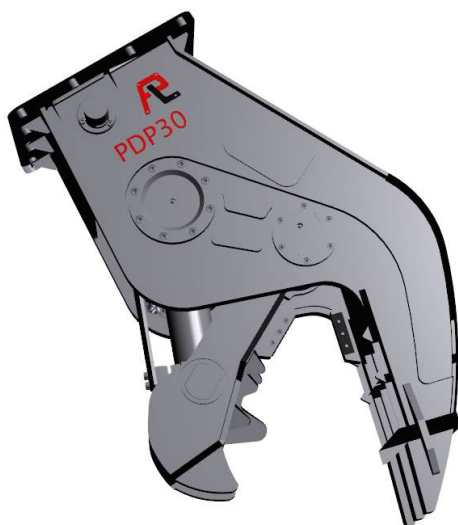
Pladdet bv
Paulinaweg 6-10
4521 RE Biervliet
The Netherlands

Tel. 0031 115 - 48 13 51
Fax 0031 115 - 48 20 54

Mail: info@pladdet.nl
Website: www.pladdet.biz

www.pladdet.biz

Hydraulic Pulverizer



The pulverizer is designed for demolition of concrete structures and buildings, the rapid removal of concrete and reinforced cutting steels and profiles. The pulverizer has 1 cylinder which is equipped with a protective cover so there is less change on damage. The Pladdet pulverizer is made of Hardox and the movable jaw of reinforced durable cast iron. Delivers maximum performance with a minimum of wear.

| TYPE | | PDP05 | PDRP05 | PDP10 | PDRP10 | PDP15 | PDRP15 | PDP20 | PDRP20 | PDP25 | PDRP25 | PDP30 | PDRP30 | PDP45 | PDRP45 |
|----------------------------|---------|-----------|-----------|-----------|-----------|-----------|-----------|-----------|-----------|-----------|----------|-----------|-----------|----------|-----------|
| Working weight | Kg | 250 | 400 | 620 | 800 | 1050 | 1200 | 1560 | 1850 | 1950 | 2100 | 2750 | 3100 | 4000 | 4600 |
| Machine class | Ton | 2 – 5 | 3 - 5 | 7 – 12 | 7 – 12 | 12 – 17 | 12 – 20 | 18 – 22 | 19 – 25 | 20 – 26 | 22 – 27 | 25 – 35 | 25 – 35 | 35 – 48 | 38 - 55 |
| Closing force blades | Ton | 37 | 44 | 87 | 87 | 163 | 163 | 191 | 186 | 258 | 202 | 257 | 257 | 347 | 347 |
| Closing force middle tooth | Ton | 17 | 20 | 34 | 34 | 67 | 67 | 91 | 84 | 116 | 95 | 121 | 121 | - | - |
| Closing force front tooth | Ton | 11 | 15 | 21 | 24 | 42 | 42 | 60 | 54 | 86 | 62 | 79 | 79 | 117 | 117 |
| Max. spread | Mm | 440 | 430 | 700 | 620 | 790 | 790 | 850 | 920 | 935 | 935 | 1100 | 1105 | 1276 | 1270 |
| Required oil flow | Ltr/min | 45 | 45 | 80 | 80 | 160 | 160 | 280 | 280 | 240 | 320 | 280 | 235 - 380 | 280-380 | 280 – 380 |
| Max. operating pressure | Bar | 250 | 250 | 250 | 250 | 320 | 320 | 320 | 320 | 320 | 320 | 320 | 320 | 320 | 320 |
| Height | Mm | 1020 | 1230 | 1380 | 1620 | 1650 | 1850 | 1830 | 2090 | 1960 | 2390 | 2200 | 2570 | 2450 | 2920 |
| Length of cutting blade | Mm | 75 | 75 | 102 | 102 | 140 | 140 | 150 | 150 | 200 | 200 | 200 | 200 | 220 | 220 |
| Cycle times (O/C) | Sec | 1.3 / 1.3 | 1.97/1.87 | 2.0 / 2.6 | 2.0 / 2.6 | 2.1 / 1.9 | 1.9 / 1.8 | 2.9 / 3.0 | 2.9 / 3.0 | 2.5 / 2.2 | 1.9/1.97 | 2.4 / 3.1 | 2.8 / 2.2 | 3.26/4.7 | 3.26/4.7 |